

CORNER OF MARIA DRIVE and ISADORE ST. • AVAILABLE AUGUST 1, 2009

Spacious 2, 3 & 4 Bedroom Apartments Featuring:

- Gracious bedrooms with walk-in closets
- Open concept kitchens with snack bar and all appliances
- Includes full size washer and dryer
- Built-in desks with hi-speed internet wiring in every bedroom
- Sound insulation
- Ceramic tile and neutral berber carpet flooring
- Large compartmentalized bathrooms with two large sink vanities
- Super insulated construction
- High-efficiency gas forced air heat and central air conditioning
- Well-lit off-street patrolled parking, one stall per occupant
- High-security locks
- Security patrolled

Another Quality Rental Community Developed and Owned by Gerrard Corporation
Managed by AHMC - **Contact: Kimberly J. Chalsma - Mobile: 715-577-8906**
Phone: 715.831.3256 ext.121 • email: kim@AHMC-assetmgmt.com • www.AHMC-assetmgmt.com



AHMC
ASSET MANAGEMENT

Call Joey Roberts
715-216-8722
www.AHMC-assetgmt.com



For more information visit
www.gerrardcompanies.com

UNIVERSITY POINT

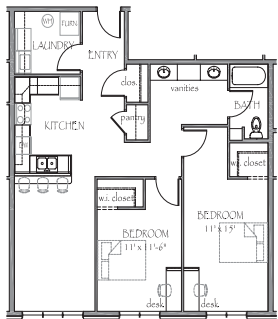
1717 Maria Drive • Stevens Point, Wisconsin



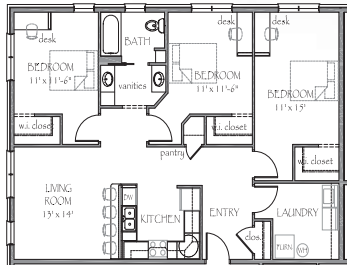
The Gerrard Companies

420 South Fifth Ave

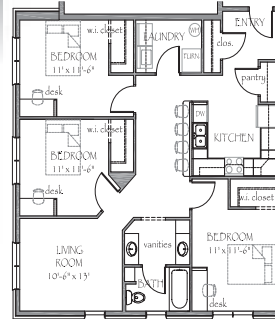
La Crosse, WI 54601



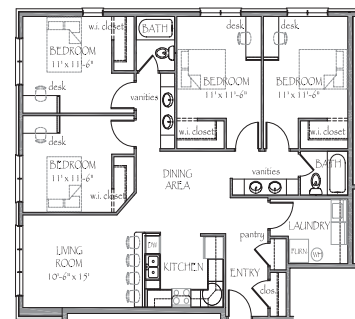
2 Bedrooms - 1,016 sq. ft.



3 Bedrooms - 1,191 sq. ft.



3 Bedrooms - 1,115 sq. ft.



4 Bedrooms - 1,371 sq. ft.